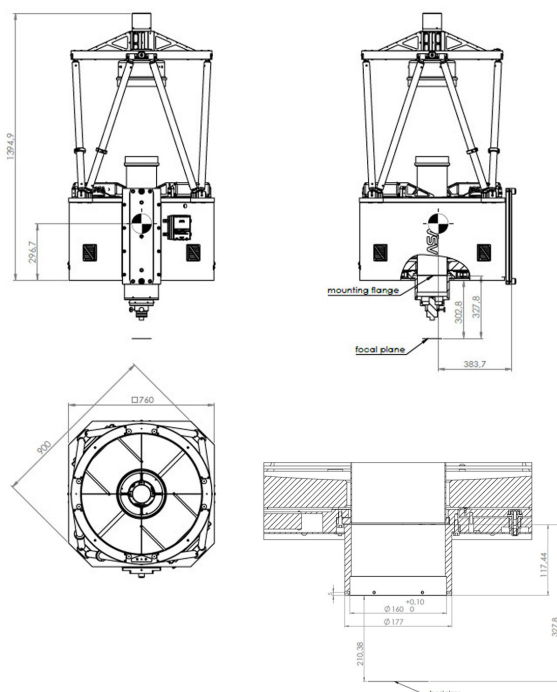


**ASA RC600 + DDM200 + polar wedge****ASA AT ITS BEST!**

The RC600\_2 package combines the RC600 OTA with our high-weight capacity DDM200 mount. This robust system can optionally be used in Twin Mode (multiple systems on one mount).

**Main Facts****Optical design**

Ritchey-Chrétien RC

**Linear central obstruction**

40%

**Focal length**

4200mm

**Focal ratio system**

f7

**Clear Aperture / Focal Ratio Primary Mirror**

600mm (23.6 inch) / f2.5

**Image field**

100mm (1.36 degrees)

**Mirror material**

Fused silica

**Back Focus from flange**

210.38mm

**Weight tube**

105kg (231lbs)

**Motor**

ASA Direct Drive

**Latitude Range**

0 to 90 degrees

**Max. load capacity**

200kg (441lbs)

**Weight mount (without counterweight)**

138kg (304lbs)

**Software**

ASA API (application programming interface) available autumn 2023 ASA Software(Autoslew, Sequence-windows based) with ASCOM-Alpaca

**Max. slew speeds**

Up to 50 degrees per second

**Pointing Accuracy (20° to 85°)**

<8" RMS with pointing model and ASA telescope

**Tracking Accuracy (20° to 85°)**

<0,25" RMS within 5 minutes tracking time over 5 min 0,05" RMS/min

**System Natural Frequency**

10 Hz or greater